

Magnetic 1



Scale 1:500

Composite Well Log

| Well Data | | | |
|------------------------------|--|--|--|
| Well Name: Magnetic 1 | | Rigs: TCL 1, Easternwell 106 | |
| Status: Exploration | | Latitude: 27° 09' 37.2870" S | |
| Area: Surat (8743) | | Longitude: 149° 25' 10.2877" E | |
| Basin: Bowen Basin | | Spud Date: 09-04-2015 (TCL1) | |
| Location: ATP 645 | | TD Date: 13-05-2015 (Easternwell 106) | |
| | | Rig Release: 27-05-2015 19:00 (Easternwell 106) | |
| UWI: 100000799278 | | Datum: AHD | |
| | | RT Elevation: 312.25m | |
| Partners: | | TD Formation: Timbury Hills Formation | |
| BNG (Surat) Pty Ltd 100% | | TD Depth: 3095.00m MDRT (driller) | |
| | | 3097.02m MDRT (logger) | |
| | | Remarks: | |
| | | | |
| | | | |
| | | | |
| | | | |
| | | | |
| | | | |
| | | | |
| | | | |
| | | | |
| | | | |
| | | | |
| | | | |
| | | | |
| | | | |
| | | | |
| | | | |
| | | | |
| | | | |
| | | | |
| | | | |
| | | | |
| | | | |
| | | | |
| | | | |
| | | | |
| | | | |
| | | | |
| | | | |
| | | | |
| | | | |
| | | | |
| | | | |
| | | | |
| | | | |
| | | | |
| | | | |
| | | | |
| | | | |
| | | | |
| | | | |
| | | | |
| | | | |
| | | | |
| | | | |
| | | | |
| | | | |
| | | | |
| | | | |
| | | | |
| | | | |
| | | | |
| | | | |
| | | | |
| | | | |
| | | | |
| | | | |
| | | | |
| | | | |
| | | | |
| | | | |
| | | | |
| | | | |
| | | | |
| | | | |
| | | | |
| | | | |
| | | | |
| | | | |
| | | | |
| | | | |
| | | | |
| | | | |
| | | | |
| | | | |
| | | | |
| | | | |
| | | | |
| | | | |
| | | | |
| | | | |
| | | | |
| | | | |
| | | | |
| | | | |
| | | | |
| | | | |
| | | | |
| | | | |
| | | | |
| | | | |
| | | | |
| | | | |
| | | | |
| | | | |
| | | | |
| | | | |
| | | | |
| | | | |
| | | | |
| | | | |
| | | | |
| | | | |
| | | | |
| | | | |
| | | | |
| | | | |
| | | | |
| | | | |
| | | | |
| | | | |
| | | | |
| | | | |
| | | | |
| | | | |
| | | | |
| | | | |
| | | | |
| | | | |
| | | | |
| | | | |
| | | | |
| | | | |
| | | | |
| | | | |
| | | | |
| | | | |
| | | | |
| | | | |
| | | | |
| | | | |
| | | | |
| | | | |
| | | | |
| | | | |
| | | | |
| | | | |
| | | | |
| | | | |
| | | | |
| | | | |
| | | | |
| | | | |
| | | | |
| | | | |
| | | | |
| | | | |
| | | | |
| | | | |
| | | | |
| | | | |
| | | | |
| | | | |
| | | | |
| | | | |
| | | | |
| | | | |
| | | | |
| | | | |
| | | | |
| | | | |
| | | | |
| | | | |
| | | | |
| | | | |
| | | | |
| | | | |
| | | | |
| | | | |
| | | | |
| | | | |
| | | | |
| | | | |
| | | | |
| | | | |
| | | | |
| | | | |
| | | | |
| | | | |
| | | | |
| | | | |
| | | | |
| | | | |
| | | | |
| | | | |
| | | | |
| | | | |
| | | | |
| | | | |
| | | | |
| | | | |
| | | | |
| | | | |
| | | | |
| | | | |
| | | | |
| | | | |
| | | | |
| | | | |
| | | | |
| | | | |
| | | | |
| | | | |
| | | | |
| | | | |
| | | | |
| | | | |
| | | | |
| | | | |
| | | | |
| | | | |
| | | | |
| | | | |
| | | | |
| | | | |
| | | | |
| | | | |
| | | | |
| | | | |
| | | | |
| | | | |
| | | | |
| | | | |
| | | | |
| | | | |
| | | | |
| | | | |
| | | | |
| | | | |
| | | | |
| | | | |
| | | | |
| | | | |
| | | | |
| | | | |
| | | | |
| | | | |
| | | | |
| | | | |
| | | | |
| | | | |
| | | | |
| | | | |
| | | | |
| | | | |
| | | | |
| | | | |

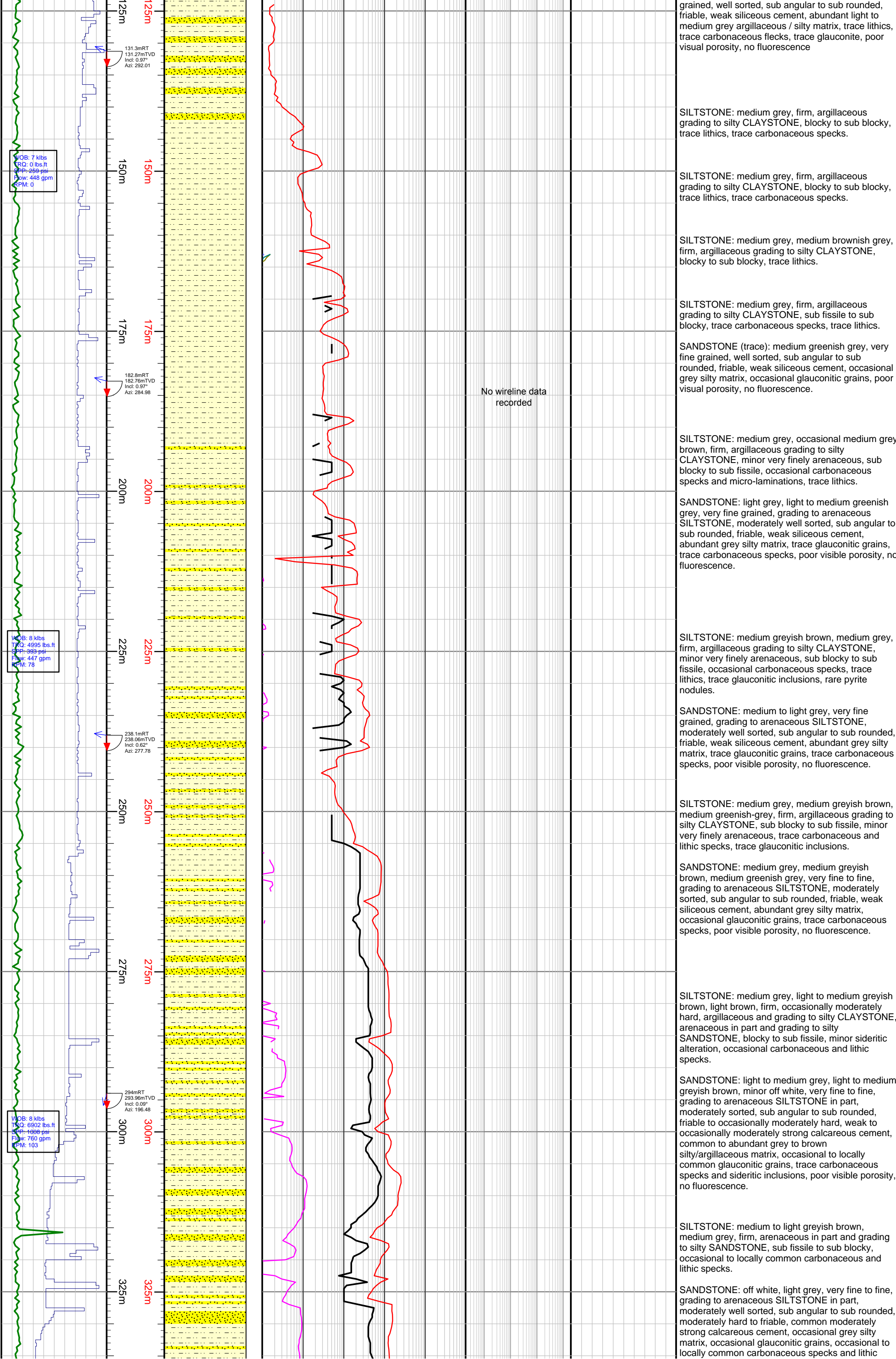
Well Configuration

| Hole and Casing Details | | | | | |
|-------------------------|--------------|-------------|--------------|----------------|----------|
| Hole Size | Hole (mMDRT) | Casing Size | Shoe (mMDRT) | Hanger (mMDRT) | Comments |
| 26" | 69.11 | 20" | 65.50 | | |
| 17 1/2" | 1203.00 | 13 3/8" | 1200.00 | | |
| 12 1/4" | 2324.00 | 9 5/8" | 2321.57 | | |

| Wireline Logging Summary | | | | | |
|--------------------------|------------------|--------------------|--------------------------|-------------------|-----------------------|
| Suite/Run No | Hole/Casing Size | Suite | Date(s) | Interval (mMDRT) | Comments |
| 1.1 | 12 1/4" | PEX-HRLA-SSCAN-PPC | 01-05-2015 | 20.00 - 2326.60 | Gamma only to surface |
| 2.1 | 6 3/4" | FMI-SSCAN-PPC | 14-05-2015 | 2321.31 - 3097.02 | |
| 2.2 | 6 3/4" | PEX-HRLA-HNGS-APS | 15-05-2015 | 2321.31 - 3097.02 | |
| 2.3 | 6 3/4" | CMR-ECS | 15-05-2015 | 2321.31 - 3097.02 | |
| 2.4 | 6 3/4" | MSCT | 15-05-2015 to 16-05-2015 | 2732.80 - 3040.70 | |
| 2.5 | 6 3/4" | VSI | 16-05-2015 to 17-05-2015 | 1198.00 - 3095.00 | |
| 2.6 | 6 3/4" | CBL-VDL-CCL | 17-05-2015 | 900.00 - 2321.31 | |
| 3.1 | 4 1/2" | JB-CCL | 25-05-2015 | 2200.00 - 3039.77 | Cased hole log |
| 3.2 | 4 1/2" | SCMT-PBMS | 25-05-2015 | 2150.00 - 3042.51 | Cased hole log |
| 3.3 | 4 1/2" | JB-CCL | 25-05-2015 | 2000.00 - 3038.00 | Cased hole log |
| 3.4 | 4 1/2" | RST-PBMS | 26-05-2015 | 2700.00 - 3038.00 | Cased hole log |
| 3.5 | 4 1/2" | TBDS | 26-05-2015 | 2150.00 - 3040.00 | Cased hole log |

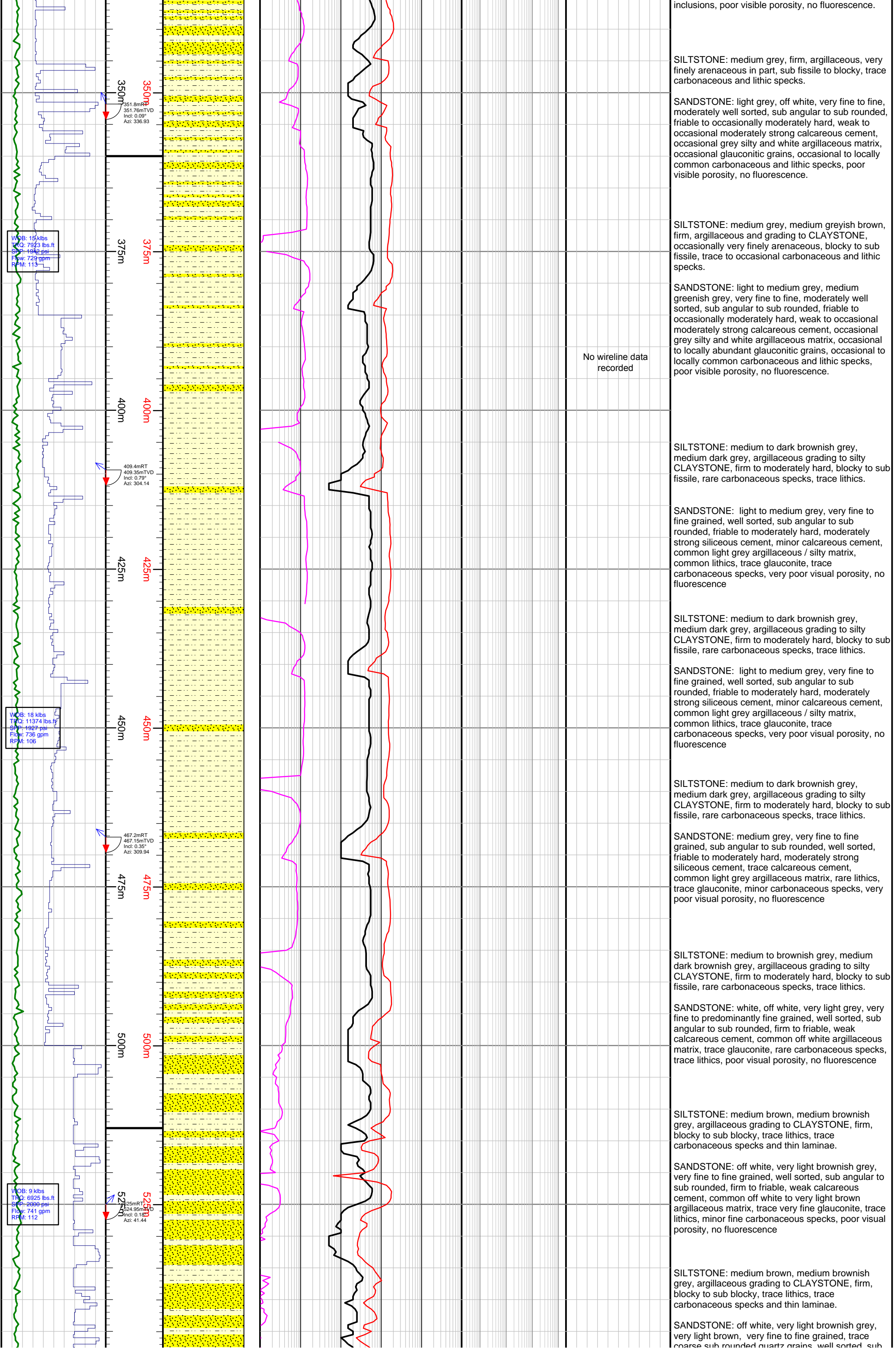
| Stratigraphy | | Gamma Ray | Depth (m) | Lithology Interpreted | Shows | Gas Data | | | Resistivity | | | Density/Neutron | | | Lithological Descriptions |
|--------------|-----------|-----------|-----------|-----------------------|-------|-------------------|-----------|--------|-------------|--------------|------|---|--|-------|---------------------------|
| Age | Formation | | | | | Total Gas (Units) | | | | | | | | | |
| | | | | | | 0.01 | | 1000 | | | | | | | |
| | | | | | | 1 | C1 (ppm) | 100000 | | | | | | | |
| | | | | | | 1 | C2 (ppm) | 100000 | | | | | | | |
| | | | | | | 1 | C3 (ppm) | 100000 | 0.2 | RLA1 (ohm.m) | 2000 | Neutron Porosity (v/v) | | -0.15 | |
| | | | | | | 1 | iC4 (ppm) | 100000 | 0.2 | RLA2 (ohm.m) | 2000 | Density Correction (g/cc) | | 0.25 | |
| | | | | | | 1 | nC4 (ppm) | 100000 | 0.2 | RLA3 (ohm.m) | 2000 | Formation Density (g/cc) | | 2.95 | |
| | | | | | | 1 | iC5 (ppm) | 100000 | 0.2 | RLA4 (ohm.m) | 2000 | PE barns/electron | | 10 | |
| | | | | | | 1 | nC5 (ppm) | 100000 | 0.2 | RLA5 (ohm.m) | 2000 | Delta-T (microsec/ft) | | 40 | |
| | | | | | | | | | | | | | | | |
| | | | | | | | | | | | | No wireline data recorded | | | |
| | | | | | | | | | | | | SILTSTONE: medium grey, very finely arenaceous grading to silty SANDSTONE, firm, blocky to sub blocky, trace lithics, trace carbonaceous specks. | | | |
| | | | | | | | | | | | | SANDSTONE: light to medium grey, translucent in parts, very fine to fine grained, well sorted, sub angular to sub rounded, friable to moderately hard, weak to moderately strong siliceous cement, abundant light to medium grey argillaceous / silty matrix, trace lithics, trace carbonaceous flecks, trace glauconite, poor visual porosity, no fluorescence | | | |
| | | | | | | | | | | | | SILTSTONE: medium grey, very finely arenaceous grading to silty SANDSTONE, firm, blocky to sub blocky, trace lithics, trace carbonaceous specks | | | |
| | | | | | | | | | | | | SILTSTONE: medium grey, very finely arenaceous grading to silty SANDSTONE, firm, blocky to sub blocky, trace lithics, trace carbonaceous specks. | | | |
| | | | | | | | | | | | | SANDSTONE: medium grey, very fine to fine | | | |

Wallumbilla Formation

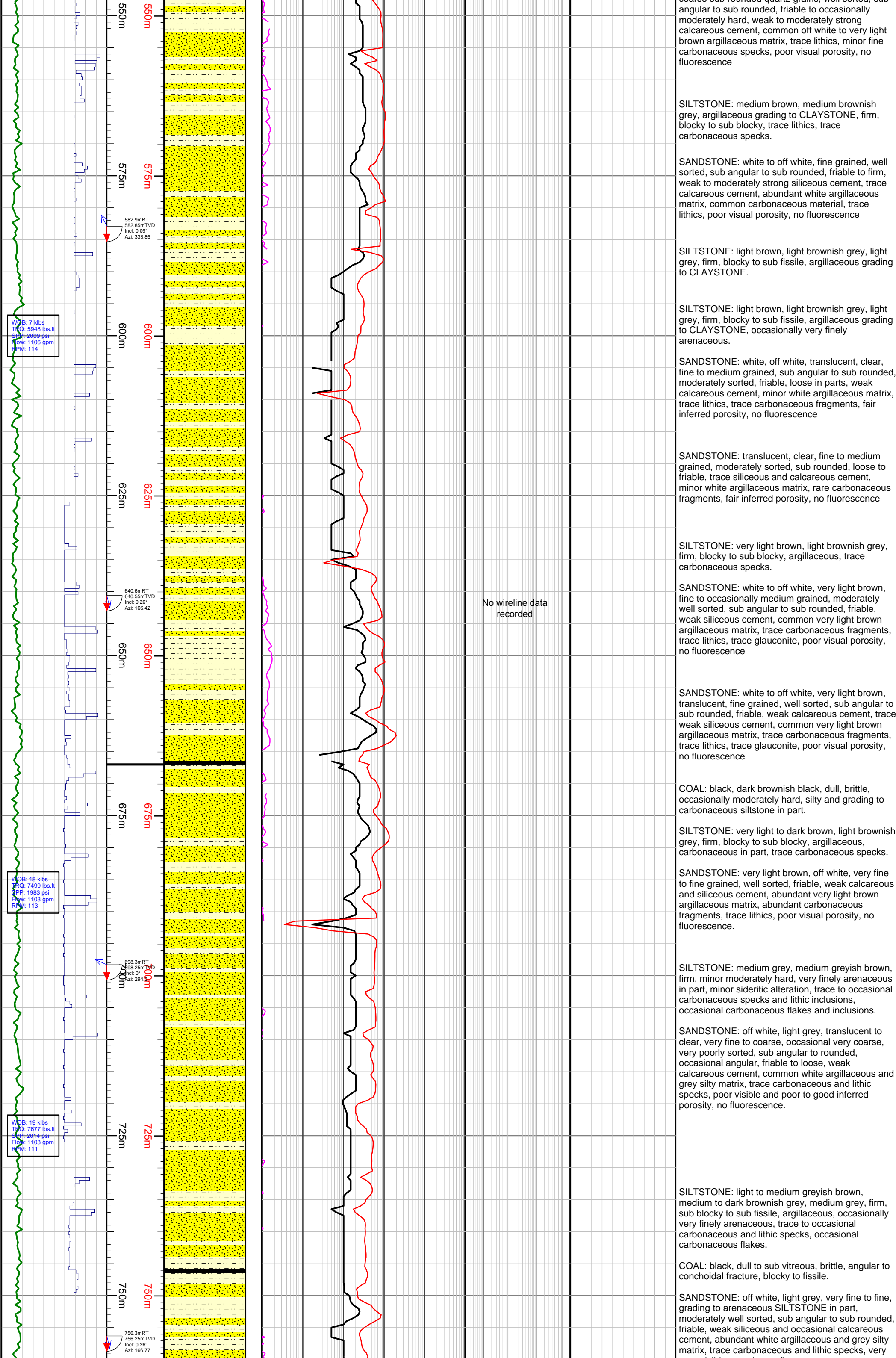


No wireline data recorded

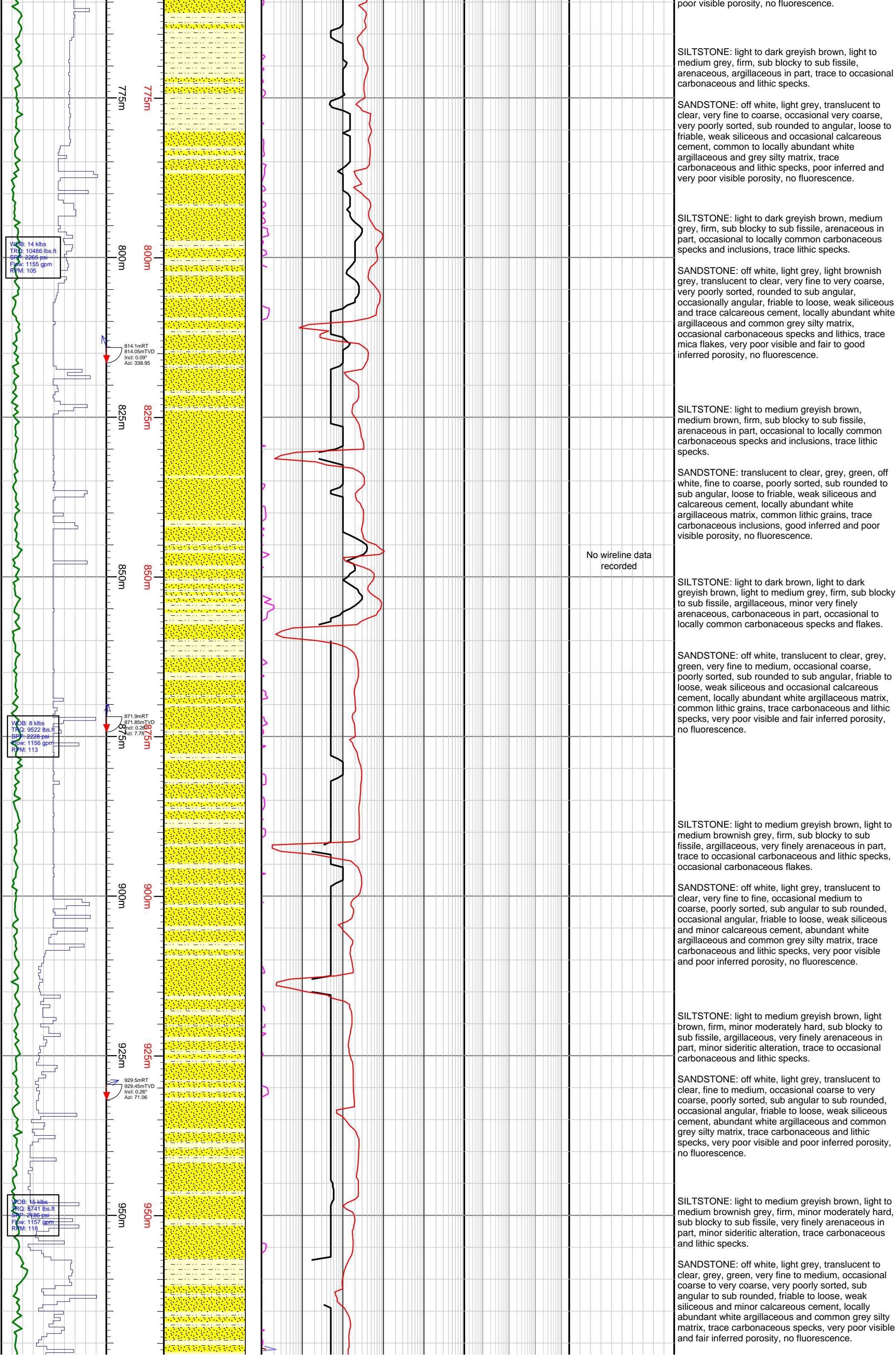
| | |
|--|------------------|
| | Bungil Formation |
|--|------------------|



Mooga Sandstone



Orallo Formation



poor visible porosity, no fluorescence.

SILTSTONE: light to dark greyish brown, light to medium grey, firm, sub blocky to sub fissile, arenaceous, argillaceous in part, trace to occasional carbonaceous and lithic specks.

SANDSTONE: off white, light grey, translucent to clear, very fine to coarse, occasional very coarse, very poorly sorted, sub rounded to angular, loose to friable, weak siliceous and occasional calcareous cement, common to locally abundant white argillaceous and grey silty matrix, trace carbonaceous and lithic specks, poor inferred and very poor visible porosity, no fluorescence.

SILTSTONE: light to dark greyish brown, medium grey, firm, sub blocky to sub fissile, arenaceous in part, occasional to locally common carbonaceous specks and inclusions, trace lithic specks.

SANDSTONE: off white, light grey, light brownish grey, translucent to clear, very fine to very coarse, occasionally angular, friable to loose, weak siliceous and trace calcareous cement, locally abundant white argillaceous and common grey silty matrix, occasional carbonaceous specks and lithics, trace mica flakes, very poor visible and fair to good inferred porosity, no fluorescence.

SILTSTONE: light to medium greyish brown, medium brown, firm, sub blocky to sub fissile, arenaceous in part, occasional to locally common carbonaceous specks and inclusions, trace lithic specks.

SANDSTONE: translucent to clear, grey, green, off white, fine to coarse, poorly sorted, sub rounded to sub angular, loose to friable, weak siliceous and calcareous cement, locally abundant white argillaceous matrix, common lithic grains, trace carbonaceous inclusions, good inferred and poor visible porosity, no fluorescence.

No wireline data recorded

SILTSTONE: light to dark brown, light to dark greyish brown, light to medium grey, firm, sub blocky to sub fissile, argillaceous, minor very finely arenaceous, carbonaceous in part, occasional to locally common carbonaceous specks and flakes.

SANDSTONE: off white, translucent to clear, grey, green, very fine to medium, occasional coarse, poorly sorted, sub rounded to sub angular, friable to loose, weak siliceous and occasional calcareous cement, locally abundant white argillaceous matrix, common lithic grains, trace carbonaceous and lithic specks, very poor visible and fair inferred porosity, no fluorescence.

SILTSTONE: light to medium greyish brown, light to medium brownish grey, firm, sub blocky to sub fissile, argillaceous, very finely arenaceous in part, trace to occasional carbonaceous and lithic specks, occasional carbonaceous flakes.

SANDSTONE: off white, light grey, translucent to clear, very fine to fine, occasional medium to coarse, poorly sorted, sub angular to sub rounded, occasional angular, friable to loose, weak siliceous and minor calcareous cement, abundant white argillaceous and common grey silty matrix, trace carbonaceous and lithic specks, very poor visible and poor inferred porosity, no fluorescence.

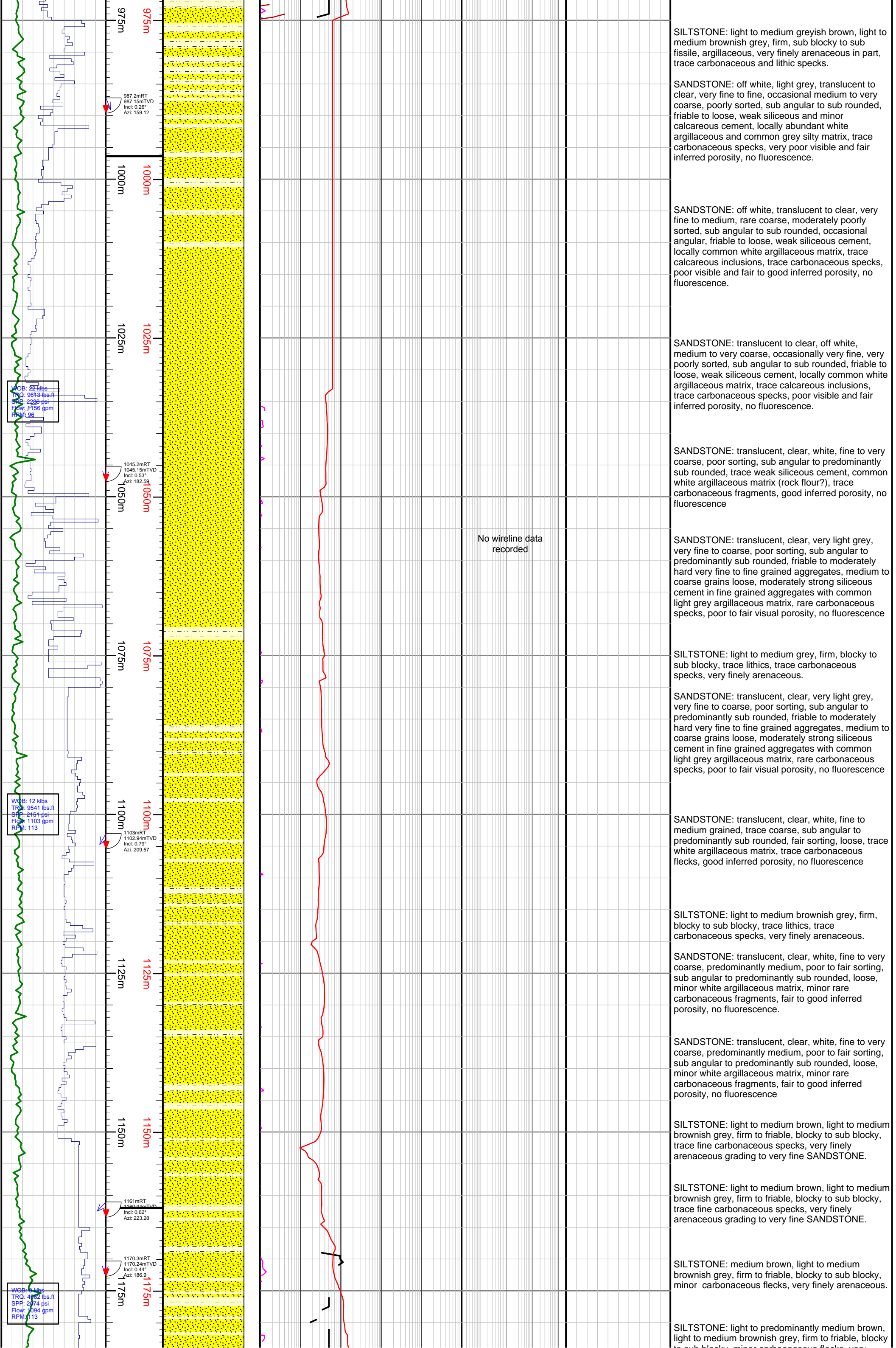
SILTSTONE: light to medium greyish brown, light brown, firm, minor moderately hard, sub blocky to sub fissile, argillaceous, very finely arenaceous in part, minor sideritic alteration, trace to occasional carbonaceous and lithic specks.

SANDSTONE: off white, light grey, translucent to clear, fine to medium, occasional coarse to very coarse, poorly sorted, sub angular to sub rounded, occasional angular, friable to loose, weak siliceous cement, abundant white argillaceous and common grey silty matrix, trace carbonaceous and lithic specks, very poor visible and poor inferred porosity, no fluorescence.

SILTSTONE: light to medium greyish brown, light to medium brownish grey, firm, minor moderately hard, sub blocky to sub fissile, very finely arenaceous in part, minor sideritic alteration, trace carbonaceous and lithic specks.

SANDSTONE: off white, light grey, translucent to clear, grey, green, very fine to medium, occasional coarse to very coarse, very poorly sorted, sub angular to sub rounded, friable to loose, weak siliceous and minor calcareous cement, locally abundant white argillaceous and common grey silty matrix, trace carbonaceous specks, very poor visible and fair inferred porosity, no fluorescence.

Gubberamunda Sandstone



SILTSTONE: light to medium greyish brown, light to medium brownish grey, firm, sub blocky to sub fissile, argillaceous, very finely arenaceous in part, trace carbonaceous and lithic specks.

SANDSTONE: off white, light grey, translucent to clear, very fine to fine, occasional medium to very coarse, poorly sorted, sub angular to sub rounded, friable to loose, weak siliceous and minor calcareous cement, locally abundant white argillaceous and common grey silty matrix, trace carbonaceous specks, very poor visible and fair inferred porosity, no fluorescence.

SANDSTONE: off white, translucent to clear, very fine to medium, rare coarse, moderately poorly sorted, sub angular to sub rounded, occasional angular, friable to loose, weak siliceous cement, locally common white argillaceous matrix, trace calcareous inclusions, trace carbonaceous specks, poor visible and fair to good inferred porosity, no fluorescence.

SANDSTONE: translucent to clear, off white, medium to very coarse, occasionally very fine, very poorly sorted, sub angular to sub rounded, friable to loose, weak siliceous cement, locally common white argillaceous matrix, trace calcareous inclusions, trace carbonaceous specks, poor visible and fair inferred porosity, no fluorescence.

SANDSTONE: translucent, clear, white, fine to very coarse, poor sorting, sub angular to predominantly sub rounded, trace weak siliceous cement, common white argillaceous matrix (rock flour?), trace carbonaceous fragments, good inferred porosity, no fluorescence

No wireline data recorded

SANDSTONE: translucent, clear, very light grey, very fine to coarse, poor sorting, sub angular to predominantly sub rounded, friable to moderately hard very fine to fine grained aggregates, medium to coarse grains loose, moderately strong siliceous cement in fine grained aggregates with common light grey argillaceous matrix, rare carbonaceous specks, poor to fair visual porosity, no fluorescence

SILTSTONE: light to medium grey, firm, blocky to sub blocky, trace lithics, trace carbonaceous specks, very finely arenaceous.

SANDSTONE: translucent, clear, very light grey, very fine to coarse, poor sorting, sub angular to predominantly sub rounded, friable to moderately hard very fine to fine grained aggregates, medium to coarse grains loose, moderately strong siliceous cement in fine grained aggregates with common light grey argillaceous matrix, rare carbonaceous specks, poor to fair visual porosity, no fluorescence

SANDSTONE: translucent, clear, white, fine to medium grained, trace coarse, sub angular to predominantly sub rounded, fair sorting, loose, trace white argillaceous matrix, trace carbonaceous flecks, good inferred porosity, no fluorescence

SILTSTONE: light to medium brownish grey, firm, blocky to sub blocky, trace lithics, trace carbonaceous specks, very finely arenaceous.

SANDSTONE: translucent, clear, white, fine to very coarse, predominantly medium, poor to fair sorting, sub angular to predominantly sub rounded, loose, minor white argillaceous matrix, minor rare carbonaceous fragments, fair to good inferred porosity, no fluorescence.

SANDSTONE: translucent, clear, white, fine to very coarse, predominantly medium, poor to fair sorting, sub angular to predominantly sub rounded, loose, minor white argillaceous matrix, minor rare carbonaceous fragments, fair to good inferred porosity, no fluorescence

SILTSTONE: light to medium brown, light to medium brownish grey, firm to friable, blocky to sub blocky, trace fine carbonaceous specks, very finely arenaceous grading to very fine SANDSTONE.

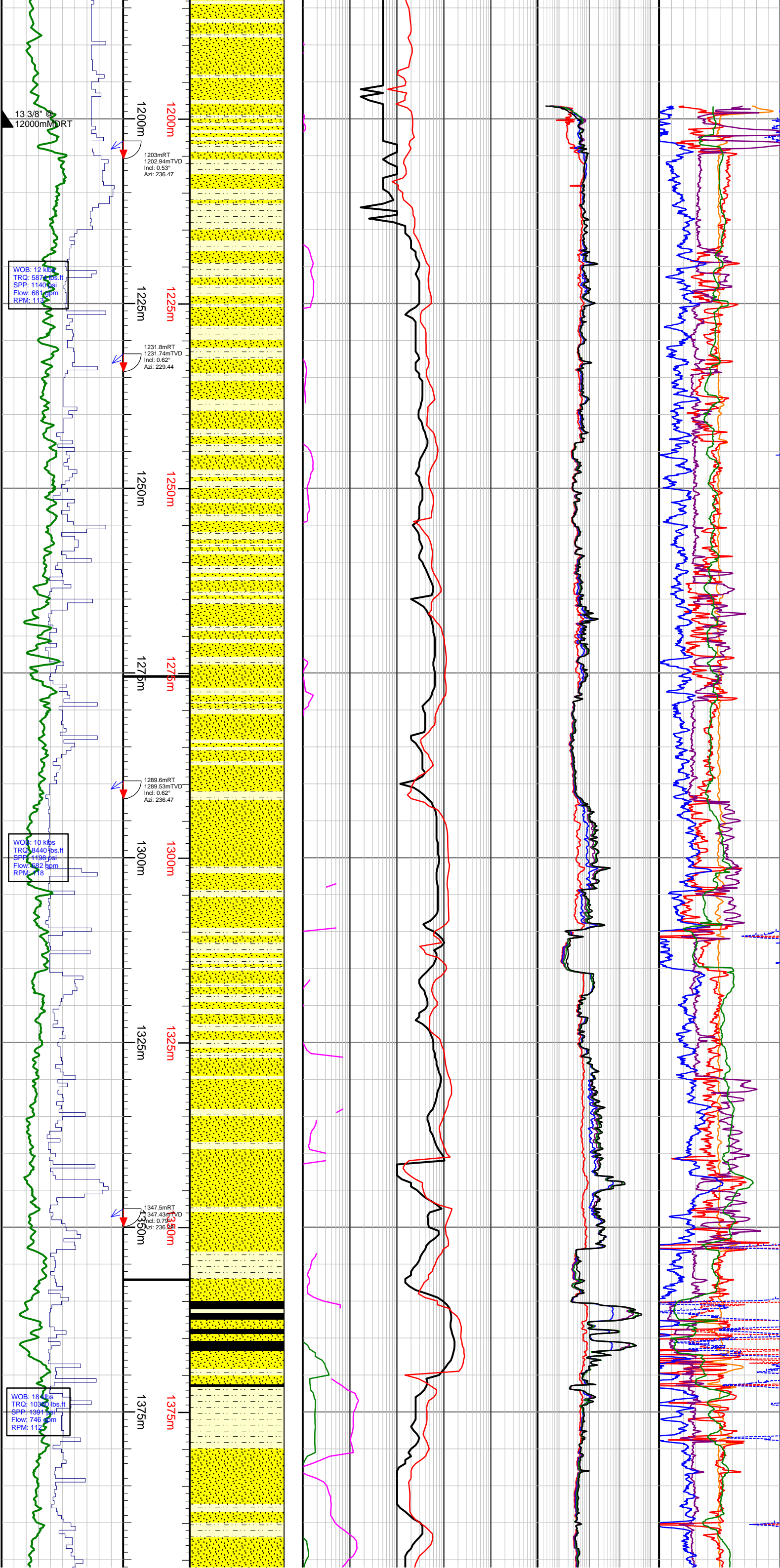
SILTSTONE: light to medium brown, light to medium brownish grey, firm to friable, blocky to sub blocky, trace fine carbonaceous specks, very finely arenaceous grading to very fine SANDSTONE.

SILTSTONE: medium brown, light to medium brownish grey, firm to friable, blocky to sub blocky, minor carbonaceous flecks, very finely arenaceous.

SILTSTONE: light to predominantly medium brown, light to medium brownish grey, firm to friable, blocky to sub blocky, minor carbonaceous flecks, very

Westbourne Formation

Springbok Sandstone



to sub blocky, minor carbonaceous flecks, very finely arenaceous.

SANDSTONE: white, very fine to predominantly fine grained, sub angular to sub rounded, well sorted, trace weak siliceous cement, abundant white argillaceous matrix, trace carbonaceous fragments, poor inferred porosity, no fluorescence.

SILTSTONE: medium brown to greyish brown, firm, sub blocky to sub fissile, very finely arenaceous, trace carbonaceous and lithic specks.

SANDSTONE: white, very fine to fine grained, sub angular to sub rounded, well sorted, weak siliceous cement, abundant white argillaceous matrix, trace carbonaceous specks, trace calcareous inclusions, poor inferred porosity, no fluorescence.

SILTSTONE: medium brownish grey, light grey, firm, sub fissile to sub blocky, very finely arenaceous, occasionally grading to silty SANDSTONE, occasional carbonaceous and lithic specks, trace mica flakes and carbonaceous laminae.

SANDSTONE: white, translucent, light grey, very fine to fine grained, occasionally grading to arenaceous SILTSTONE, rare coarse quartz grains, moderately well sorted, sub angular to sub rounded, weak siliceous cement, abundant white argillaceous matrix, trace carbonaceous specks, trace mica flakes, poor inferred porosity, no fluorescence.

SILTSTONE: medium to light brownish grey, medium to light grey, firm, sub blocky to sub fissile, very finely arenaceous, occasionally grading to silty SANDSTONE, trace carbonaceous and lithic specks, trace micro micaceous.

SANDSTONE: translucent, white, fine to very coarse, sub angular to sub rounded, poor sorting, loose quartz grains, good inferred porosity, no fluorescence

SANDSTONE: white, very light grey, very fine to fine grained, trace coarse quartz grains, sub angular to sub rounded, friable, weak siliceous cement, common white argillaceous matrix, trace lithics, trace fine carbonaceous specks, poor visual porosity, no fluorescence.

SANDSTONE: translucent, white, fine to very coarse, sub angular to sub rounded, poor sorting, loose quartz grains, good inferred porosity, no fluorescence

SILTSTONE: light to medium brownish grey, light to medium grey, firm to friable, blocky to sub blocky, common carbonaceous material, trace lithics, arenaceous.

SANDSTONE: white, very light grey, translucent, clear, very fine to coarse grained, poor sorting, sub angular to sub rounded, friable, weak siliceous cement, common white argillaceous matrix, trace lithics, minor carbonaceous fragments, poor to fair visual porosity, no fluorescence

SILTSTONE: light to medium brownish grey, light to medium grey, firm to friable, blocky to sub blocky, common carbonaceous material, trace lithics, arenaceous.

SANDSTONE: white, very light grey, trace translucent, clear, very fine to fine, minor medium to coarse grained, poor to fair sorting, sub angular to sub rounded, friable, weak siliceous cement, common white argillaceous matrix, trace lithics, minor carbonaceous fragments, poor to fair visual porosity, no fluorescence

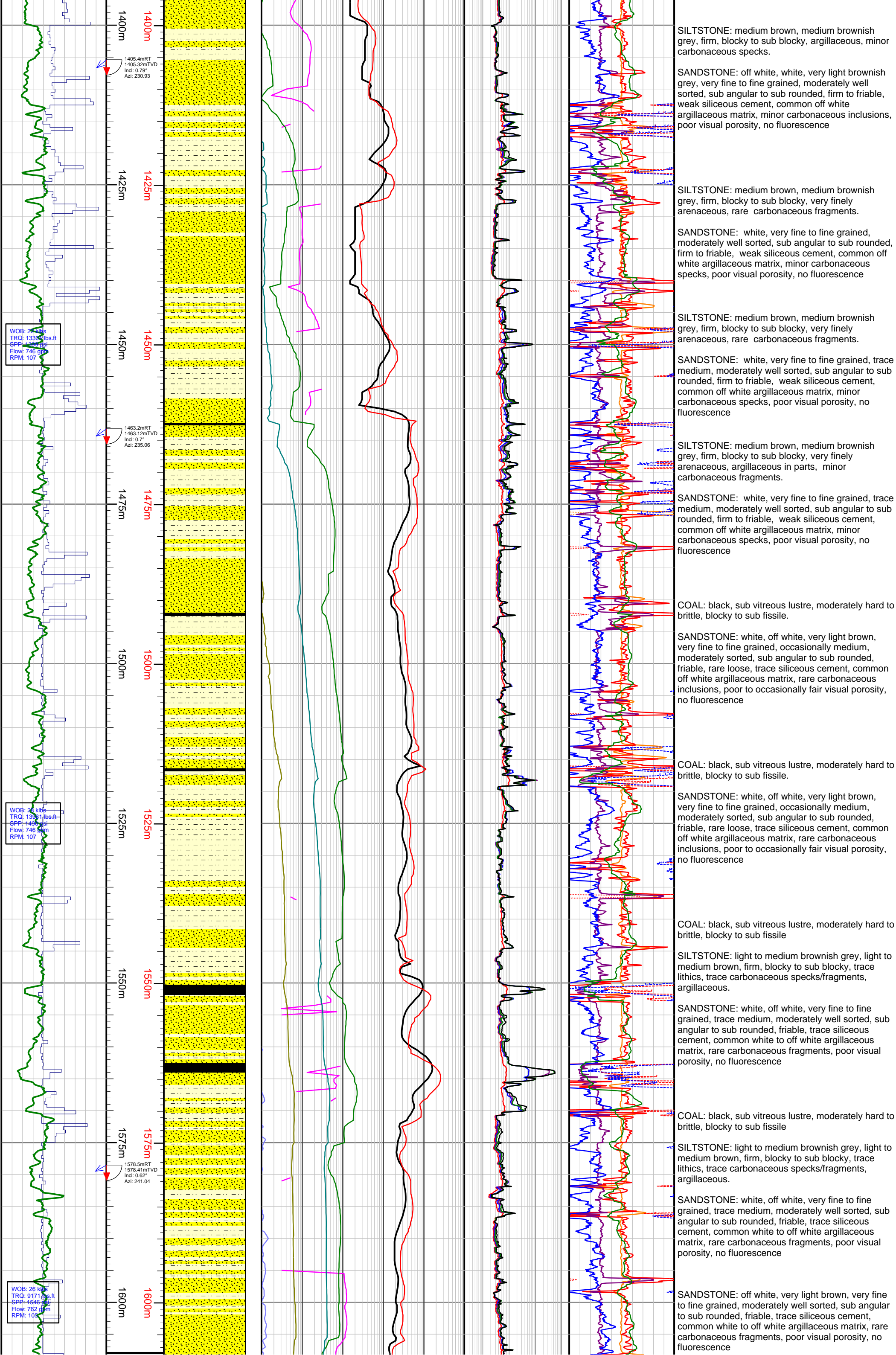
COAL: black, very dark brownish black, sub vitreous lustre, hard, brittle in parts, blocky.

SILTSTONE: medium brown, medium brownish grey, firm, blocky to sub blocky, argillaceous, minor carbonaceous specks.

SANDSTONE: off white, white, very light brownish grey, very fine to fine grained, moderately well sorted, sub angular to sub rounded, firm to friable, weak siliceous cement, common off white argillaceous matrix, minor carbonaceous inclusions, poor visual porosity, no fluorescence

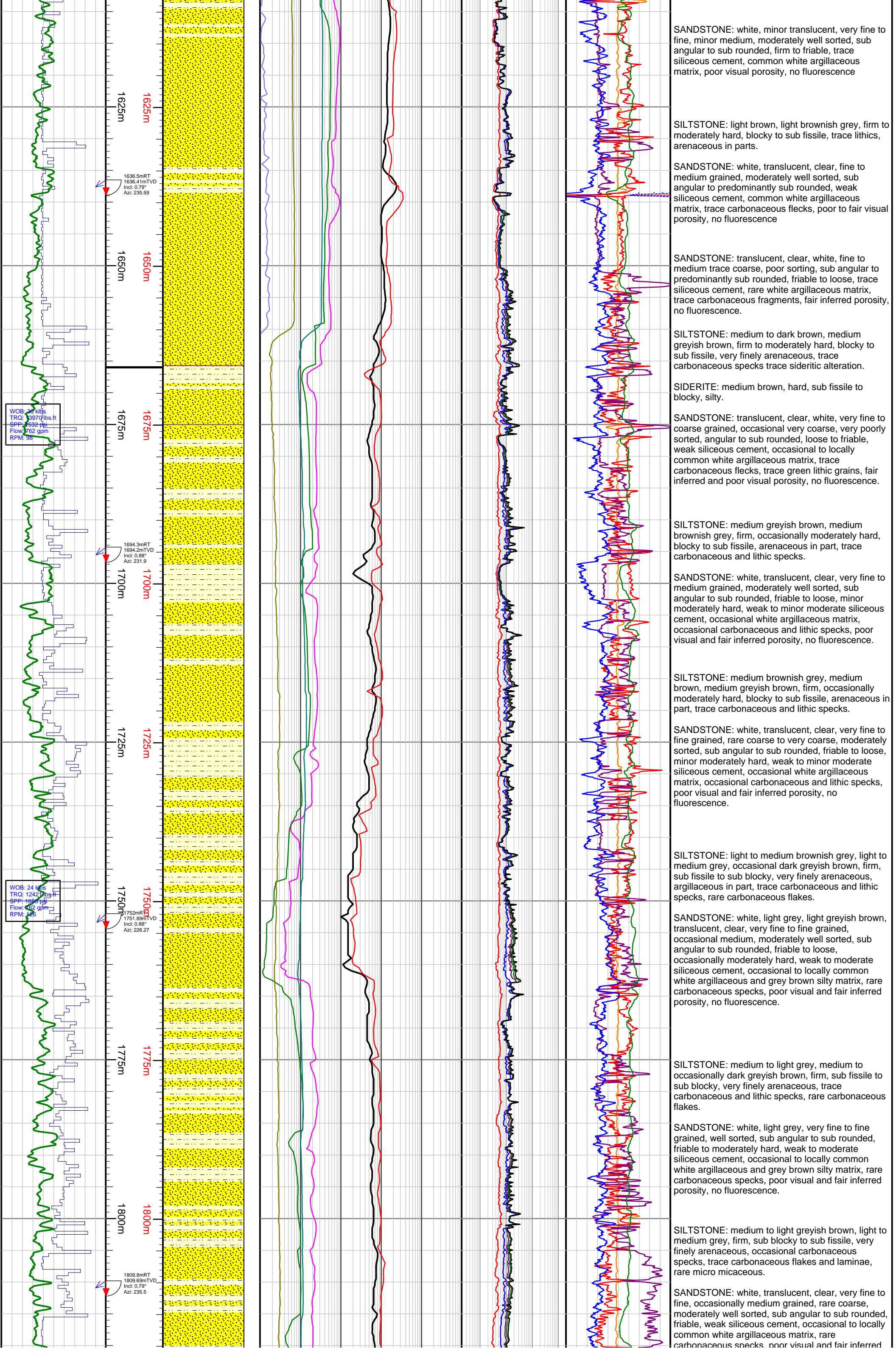
SANDSTONE: off white, white, very light brownish grey, very fine to fine grained, moderately well sorted, sub angular to sub rounded, firm to friable, weak siliceous cement, common off white argillaceous matrix, minor carbonaceous inclusions, poor visual porosity, no fluorescence

Walloon Coal Measures



Hutton Sandstone

Evergreen Formation



porosity, no fluorescence.

SILTSTONE: medium to dark greyish brown, medium brownish grey, firm, sub blocky to sub fissile, very finely arenaceous, occasional carbonaceous specks, trace carbonaceous flakes and laminae.

SANDSTONE: white, light grey, very fine to fine, well sorted, sub angular to sub rounded, friable to moderately hard, weak to moderate siliceous cement, occasional to locally common white argillaceous and grey silty matrix, rare carbonaceous specks, poor visual and fair inferred porosity, no fluorescence.

SILTSTONE: light to medium grey, medium to dark greyish brown, dark brown, firm, sub fissile to sub blocky, very finely arenaceous, occasional carbonaceous flakes and laminae, trace carbonaceous flake, trace micro micaceous.

SANDSTONE: white, light grey, translucent, clear, very fine to fine, occasionally medium to coarse, moderately poorly sorted, sub rounded to sub angular, friable to moderately hard, weak to moderate siliceous cement, trace calcareous cement, occasional to locally common white argillaceous and grey silty matrix, rare carbonaceous specks, poor visual and fair inferred porosity, no fluorescence.

SILTSTONE: light to medium greyish brown, medium brownish grey, firm, occasionally moderately hard, sub fissile to sub blocky, finely arenaceous, grading to silty **SANDSTONE** in part, occasional carbonaceous specks, trace carbonaceous flakes, trace micro micaceous.

SANDSTONE: light grey, white, light greyish brown, fine to very fine, grading to arenaceous **SILTSTONE** in part, moderately well sorted, sub angular to sub rounded, friable to moderately hard, weak to moderate siliceous cement, occasional to locally common grey brown silty and white argillaceous matrix, trace carbonaceous and lithic specks, trace mica flakes, poor visual porosity, no fluorescence.

SILTSTONE: medium to light greyish brown, medium brown, firm, occasionally moderately hard, sub blocky to sub fissile, finely arenaceous, trace carbonaceous and lithic specks, rarely micro micaceous.

SANDSTONE: white, light grey, fine to very fine, well sorted, sub angular to sub rounded, friable to loose, trace moderately hard, weak to trace moderate siliceous cement, occasional to locally common grey silty and white argillaceous matrix, trace lithic specks and carbonaceous specks, poor visual porosity, no fluorescence.

SILTSTONE: medium to medium dark greyish brown, medium grey, firm, occasionally moderately hard, sub blocky to sub fissile, finely arenaceous and grading to silty **SANDSTONE** in part, trace carbonaceous and lithic specks, rarely micro micaceous.

SILTSTONE: medium brown, medium brownish grey, moderately hard, blocky to sub fissile, trace lithics, trace micro micaceous, rare fine carbonaceous specks, arenaceous in parts.

SANDSTONE: white, translucent, clear, very fine to fine grained, trace medium, moderately sorted, sub angular to sub rounded, friable to moderately hard, weak siliceous cement, common white argillaceous matrix, trace lithics, trace fine carbonaceous specks, poor visual porosity, no fluorescence

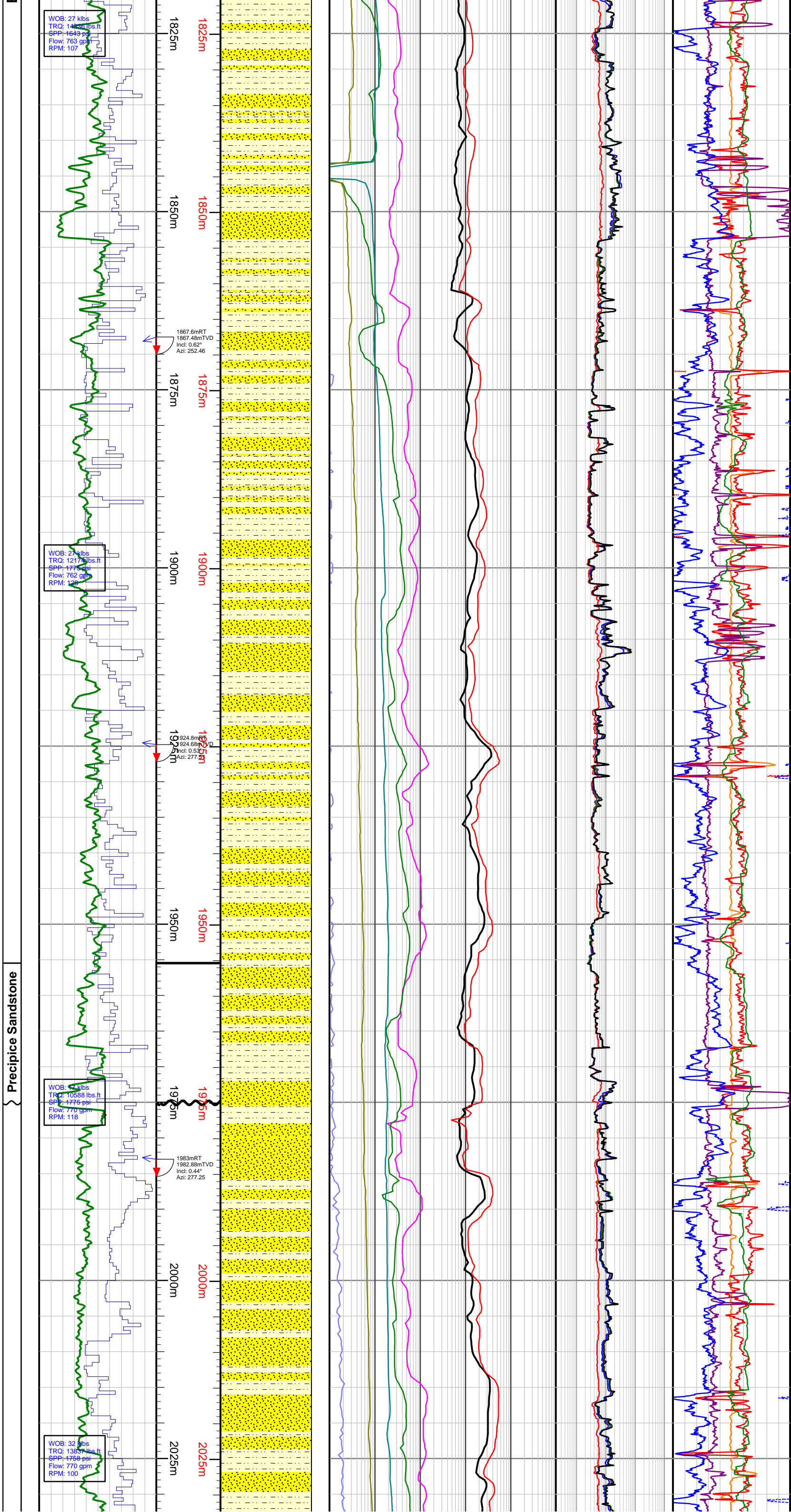
SILTSTONE: medium grey, occasionally light to medium brownish grey, moderately hard, blocky to sub fissile, trace lithics, trace fine carbonaceous specks.

SANDSTONE: light grey, light greenish grey, very fine to fine grained, moderately well sorted, sub angular to sub rounded, moderately strong siliceous cement, minor light grey argillaceous matrix, trace carbonaceous specks, rare lithics, very poor visual porosity, no fluorescence

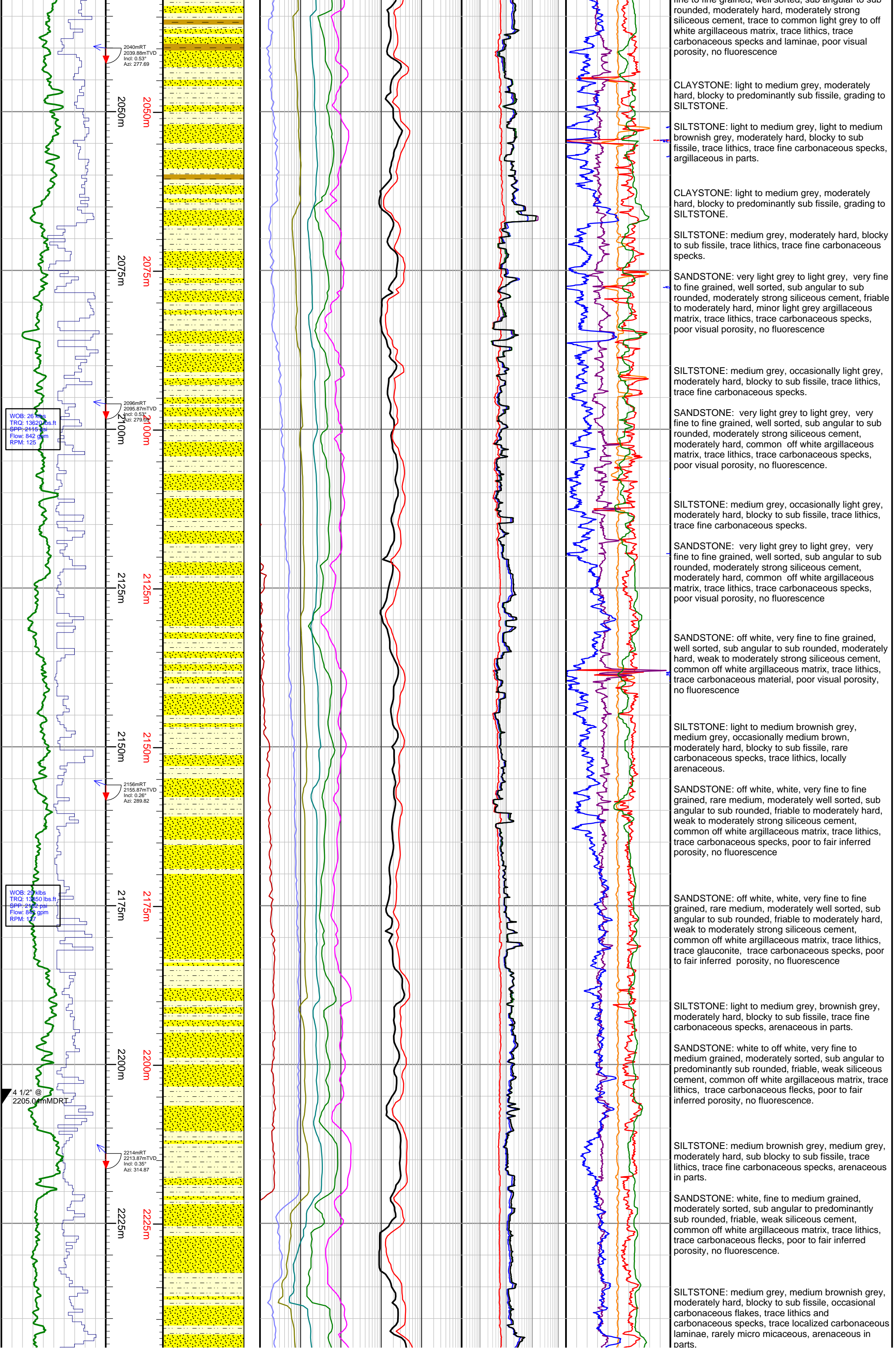
SANDSTONE: white, off white, very fine to fine grained, well sorted, sub angular to sub rounded, weak siliceous cement, common white argillaceous matrix, rare lithics, rare carbonaceous specks, poor visual porosity, no fluorescence

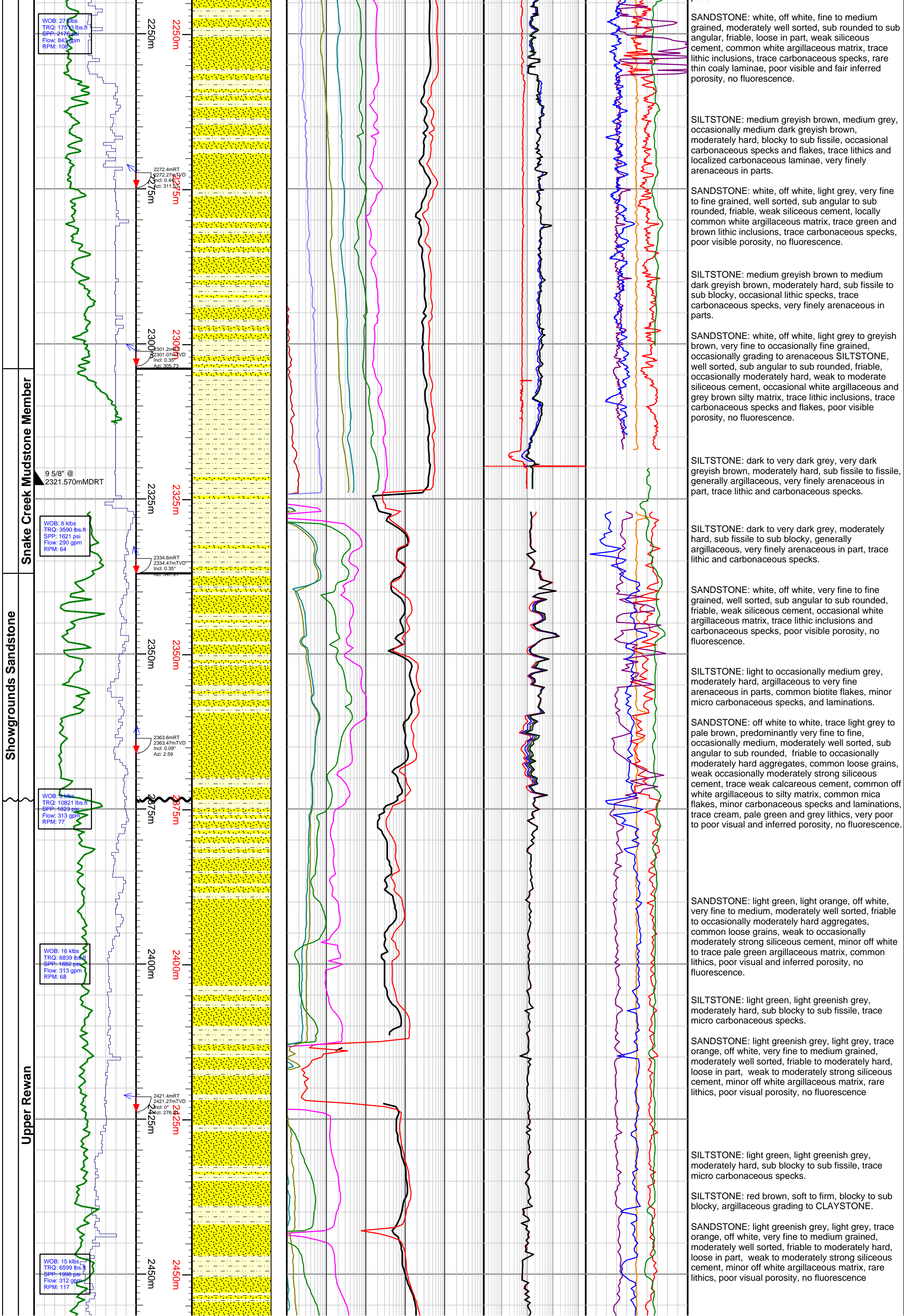
SILTSTONE: medium brown, light to medium brownish grey, light to medium grey, moderately hard, blocky to sub fissile, trace lithics, trace fine carbonaceous specks and laminae, arenaceous in parts.

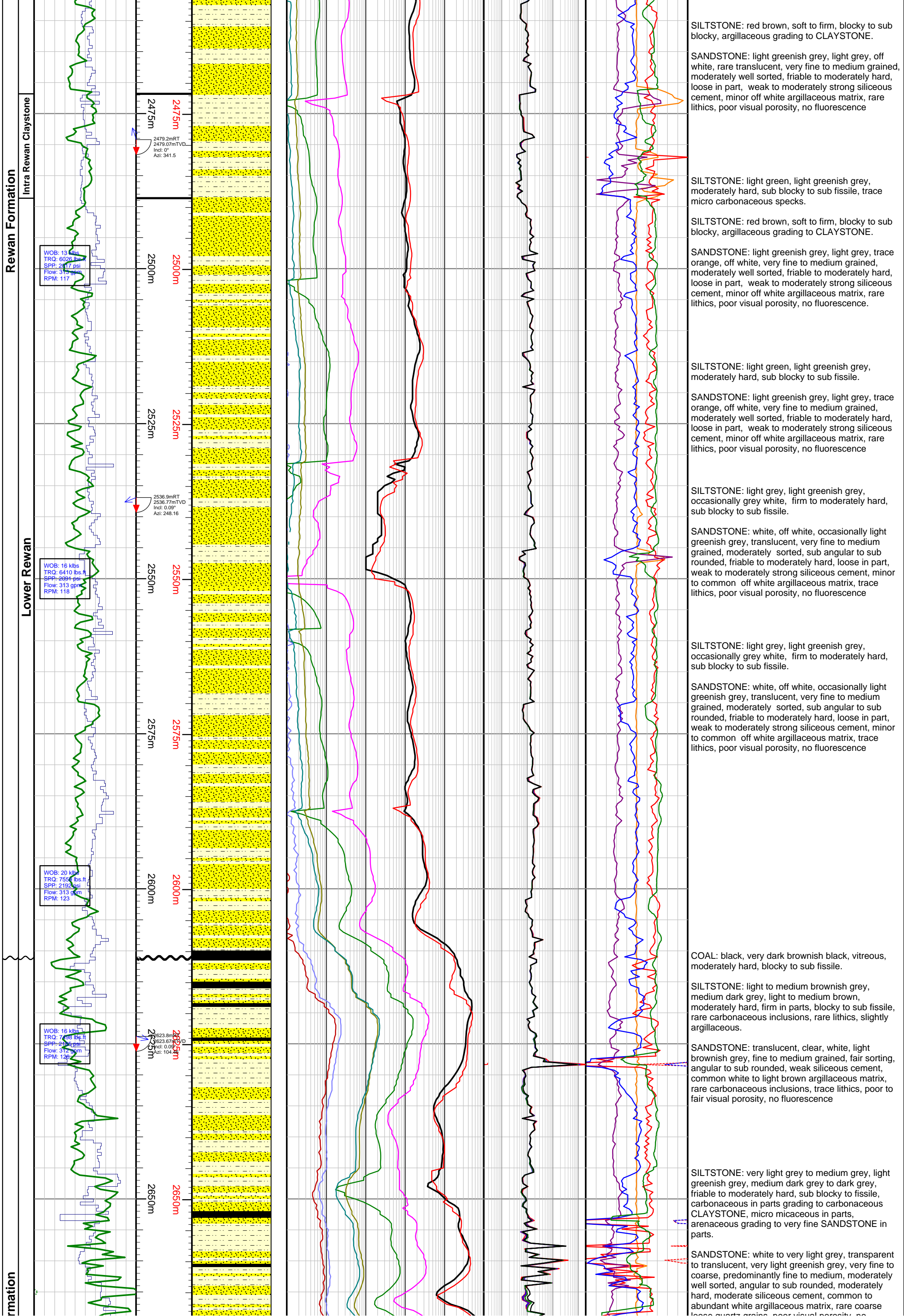
SANDSTONE: light grey, occasionally off white, very fine to fine grained, well sorted, sub angular to sub

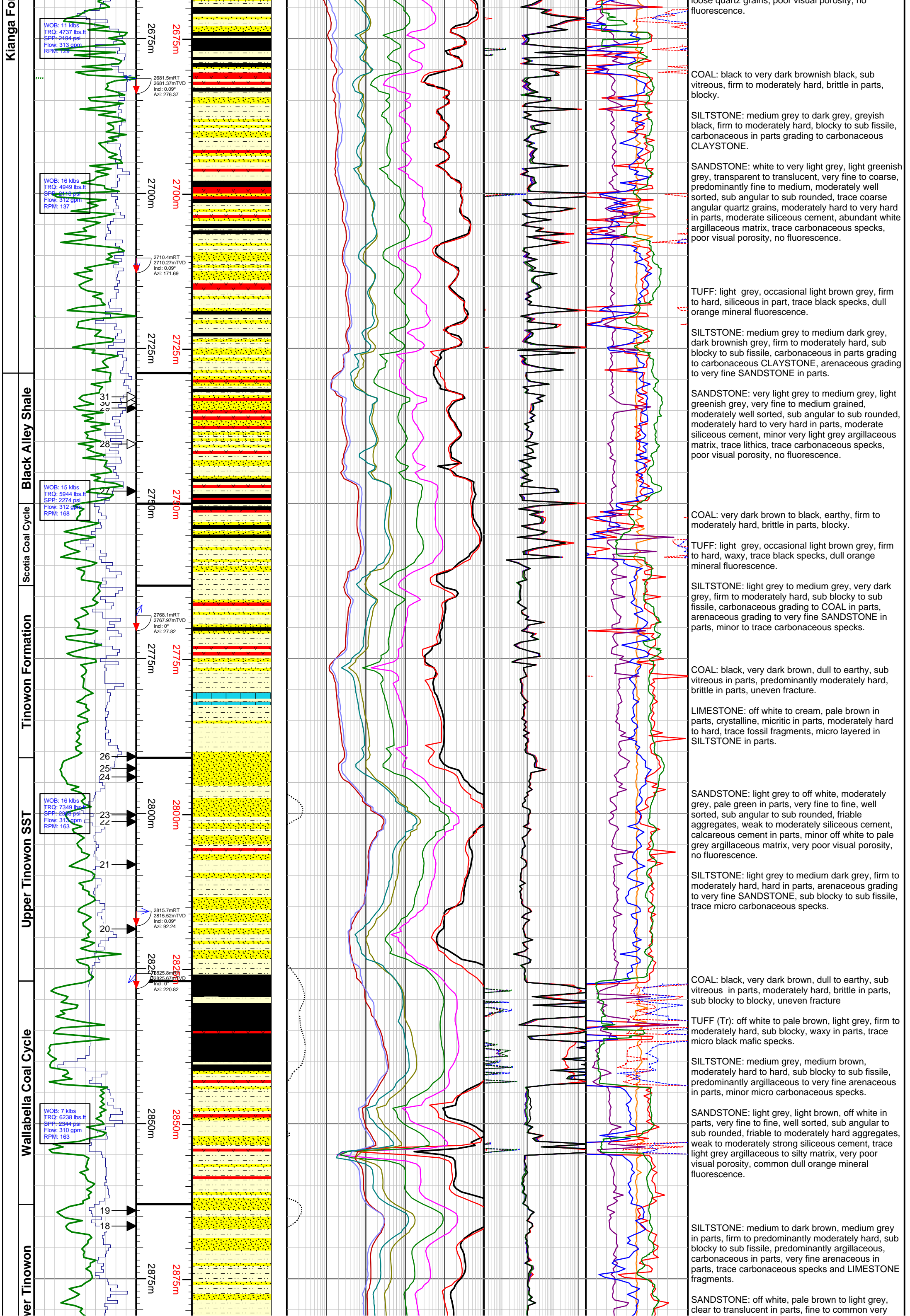


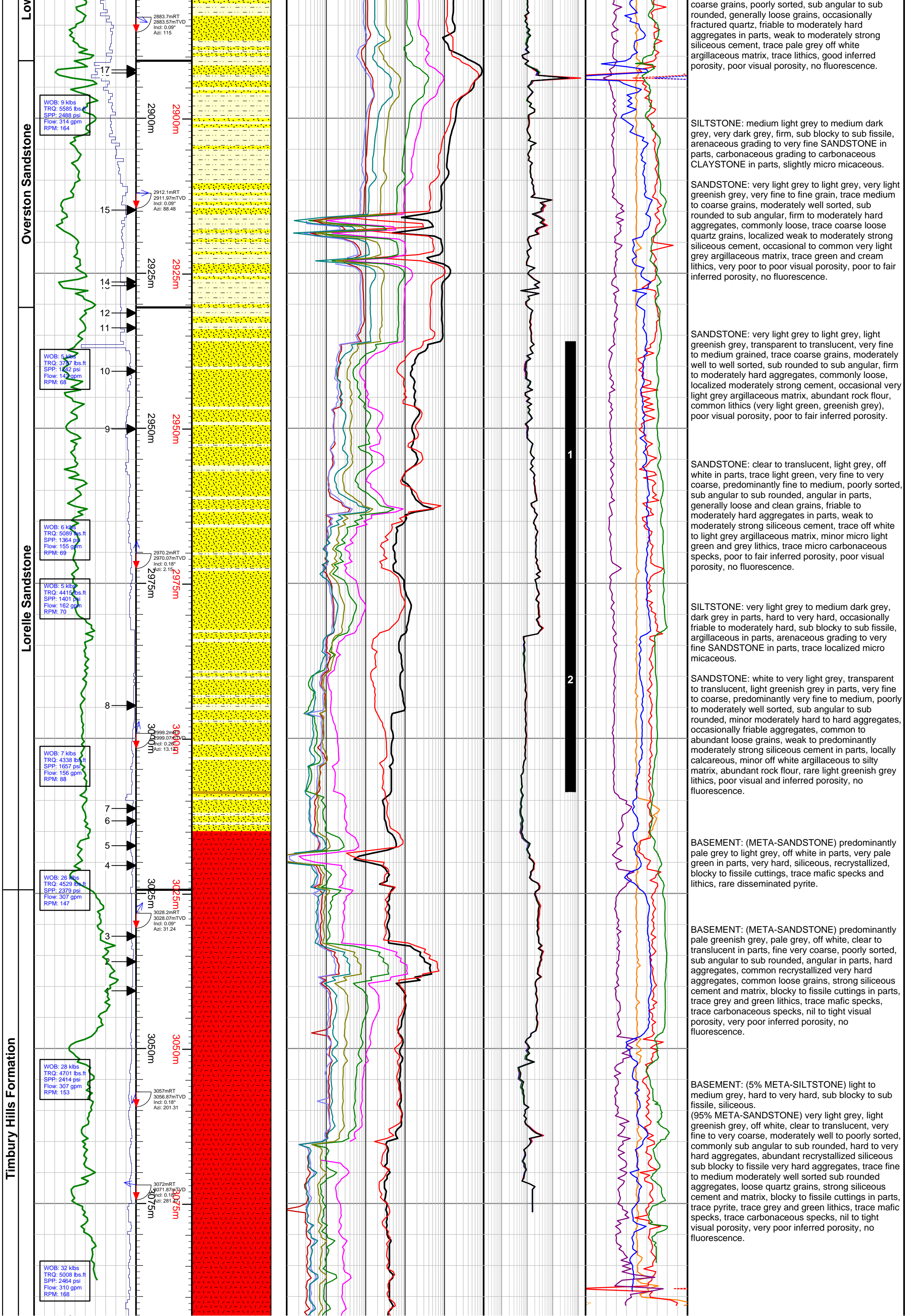
Moolayember Formation











| | | | | | | | | | | | |
|---------------------------|-----|----------------|---|--|--------------|-----------------|------|--------------------------|------|-------|------------------------------|
| 4 1/2" @ 3094.170mMDRT | | 3100m 3100m | | <div> <div>Total Depth</div> <div>Driller: 3095.00m MDRT</div> <div>Logger: 3097.02m MDRT</div> </div> | | | | | | | |
| Gamma (API Units) | | ROP (m/hr) | | Total Gas (Units) | | RLA5 (ohm.m) | | Delta-T (microsec/ft) | | | |
| 0 | 250 | 100 | 0 | 0.01 | 1000 | 0.2 | 2000 | 140 | 40 | | |
| | | | | 1 | C1 (ppm) | 100000 | 0.2 | RLA4 (ohm.m) | 2000 | 0 | PE barns/electron |
| | | | | 1 | C2 (ppm) | 100000 | 0.2 | RLA3 (ohm.m) | 2000 | 1.95 | Formation Density (g/cc) |
| | | | | 1 | C3 (ppm) | 100000 | 0.2 | RLA2 (ohm.m) | 2000 | -0.25 | Density Correction (g/cc) |
| | | | | 1 | iC4 (ppm) | 100000 | 0.2 | RLA1 (ohm.m) | 2000 | 0.45 | Neutron Porosity (v/v) |
| | | | | 1 | nC4 (ppm) | 100000 | | | | | |
| | | | | 1 | iC5 (ppm) | 100000 | | | | | |
| | | | | 1 | nC5 (ppm) | 100000 | | | | | |

Magnetic 1 - COMPOSITE LOG

| Sidewall Cores | | |
|----------------|----------|---|
| Depth (mMDRT) | Recovery | Lithology/Comments |
| 3040.70 | Good | META-SANDSTONE: light grey to light greenish grey, re-crystalized quartz, hard to very hard, strong siliceous cement, trace to minor siliceous matrix, trace medium to coarse lithics, trace pyrite, very poor to nil visible porosity, no fluorescence. |
| 3036.00 | Good | META-SANDSTONE: light grey to light greenish grey, re-crystalized quartz, hard to very hard, strong siliceous cement, trace to minor siliceous matrix, trace medium lithics, rare pyrite, very poor to nil visible porosity, no fluorescence. |
| 3031.90 | Good | META-SANDSTONE: light grey to light greenish grey, re-crystalized quartz, hard to very hard, strong siliceous cement, trace to minor siliceous matrix, trace medium lithics, rare pyrite, very poor to nil visible porosity, no fluorescence. |
| 3020.50 | Good | META-SANDSTONE: light grey to light greenish grey, re-crystalized quartz, hard to very hard, strong siliceous cement, trace to minor siliceous matrix, trace META-SILTSTONE sub rounded to rounded very coarse to pebble, trace medium lithics, rare pyrite, very poor to nil visible porosity, no fluorescence. Fractured. |
| 3017.30 | Good | META-SANDSTONE: light grey to light greenish grey, re-crystalized sub angular quartz, hard to very hard, strong siliceous cement, trace to minor siliceous matrix, trace to minor META-SILTSTONE sub rounded to sub angular very coarse to pebble, rare medium lithics, very poor to nil visible porosity, no fluorescence. |
| 3013.30 | Good | META-SANDSTONE: light grey to light greenish grey, re-crystalized sub angular quartz, hard to very hard, strong siliceous cement, trace to minor siliceous/argillaceous matrix, minor to common SILTSTONE sub rounded to sub angular very coarse to pebble, trace pyrite, rare fine to coarse lithics, very poor to nil visible porosity, no fluorescence. |
| 3011.30 | Good | CONGLOMERATIC SANDSTONE: very light grey to light greenish grey, commonly re-crystalized sub angular quartz grading to META-SANDSTONE, hard to very hard, strong siliceous cement, trace to minor siliceous/argillaceous matrix, minor medium grey SILTSTONE sub rounded to angular very coarse to pebble, minor to common medium to coarse greyish grey lithics, very poor to nil visible porosity, no fluorescence. |
| 2994.70 | Good | CONGLOMERATIC SANDSTONE: very light grey to light greenish grey, commonly re-crystalized sub angular quartz grading to META-SANDSTONE, hard to very hard, strong siliceous cement, trace to minor siliceous/argillaceous matrix, minor medium grey SILTSTONE sub rounded to angular very coarse to pebble, common medium to pebble greyish grey lithics, very poor to nil visible porosity, no fluorescence. |
| 2950.10 | Good | SANDSTONE: very light grey to light brownish grey, very fine to very coarse clear to translucent quartz grains, sub angular to sub rounded, hard to very hard, poorly sorted, strong siliceous cement, common very light grey to light grey argillaceous matrix, trace medium grey lithics, poor to very poor visible porosity, no fluorescence. |
| 2940.80 | Good | SANDSTONE: very light grey to light brownish grey, very fine to coarse predominantly transparent to translucent quartz grains, sub angular to sub rounded, hard, poorly to moderately sorted, moderately strong siliceous cement, common very light grey argillaceous matrix, trace medium grey to dark grey medium to coarse lithics, poor to very poor visible porosity, no fluorescence. |
| 2933.80 | Good | SANDSTONE: medium light grey to medium grey, very fine to medium grained, occasionally coarse quartz, sub angular to sub rounded, hard, moderately sorted, moderately strong siliceous cement, common medium grey argillaceous matrix, trace medium grey to dark grey lithics, poor to very poor visible porosity, no fluorescence. |
| 2931.40 | Good | SANDSTONE: medium light grey to medium grey, very fine to medium grained, trace coarse, sub angular to sub rounded, hard, moderately to poorly sorted, moderately strong siliceous cement, trace light brownish grey argillaceous matrix, trace medium grey to dark grey lithics, poor to very poor visible porosity, no fluorescence. |
| 2927.00 | Good | SANDSTONE: very light grey to light brownish grey, very fine to very coarse grained, sub angular to sub rounded, hard, moderately to poorly sorted, moderately strong siliceous cement, trace very light grey to very light brownish grey argillaceous matrix, trace medium grey to dark grey lithics, trace carbonaceous fragments, poor visible porosity, no fluorescence. |
| 2926.40 | Good | ARENACEOUS SILTSTONE: medium grey to medium dark grey, arenaceous grading to very fine SANDSTONE, trace lithics, trace mica, trace pyrite, moderately hard to hard. |
| 2914.80 | Good | ARENACEOUS SILTSTONE: medium grey to medium dark grey, arenaceous grading to very fine SANDSTONE, trace lithics, trace mica, trace pyrite, moderately hard to hard. |
| 2892.70 | Good | SANDSTONE: very light grey to light greenish grey, transparent to translucent, mottled, fine to granule, sub rounded to sub angular, hard, poorly sorted, moderately strong cement, minor very light grey to very light brownish grey argillaceous matrix, trace lithics, poor to fair visible porosity, no fluorescence. |
| 2892.20 | Good | CONGLOMERATIC SANDSTONE: light grey to medium grey, very fine to medium grained, common granules and pebbles, poorly sorted, hard, moderately strong cement, argillaceous in parts, very poor visible porosity, no fluorescence. |
| 2866.50 | Good | SANDSTONE: very light grey to light brownish grey, very fine to very coarse grained, rare granule, sub angular to sub rounded, moderately hard to hard, moderately to poorly sorted, moderately strong cement, minor very light grey to very light brownish grey argillaceous matrix, trace lithics, poor to fair visible porosity, trace speckled dull yellow fluorescence. |
| 2864.00 | Good | SANDSTONE: very light grey to light brownish grey, very fine to very coarse grained, rare granule, sub angular to sub rounded, moderately hard, moderately to poorly sorted, moderately strong cement, minor very light grey to very light brownish grey argillaceous matrix, trace lithics, poor to fair visible porosity, trace speckled very dull yellow fluorescence. |
| 2816.60 | Good | SANDSTONE: light grey to light brownish grey, very fine to medium grained, sub angular to sub rounded, moderately hard, moderately to well sorted, moderately strong cement, trace light grey argillaceous matrix, trace lithics, poor to fair visible porosity, minor speckled dull yellow fluorescence. SILTSTONE: medium grey to medium dark grey, slightly arenaceous grading to very fine SANDSTONE, moderately hard to hard. |
| 2808.20 | Good | SILTSTONE: medium grey to medium dark grey, arenaceous, minor dark grey argillaceous clasts, moderately hard. |
| 2801.30 | Good | SANDSTONE: light grey to light brownish grey, very fine to medium grained, sub angular to sub rounded, moderately hard, moderately to well sorted, moderately strong cement, trace light grey argillaceous matrix, trace lithics, poor to fair visible porosity, no fluorescence. |
| 2800.20 | Good | SANDSTONE: light grey to light brownish grey, very fine to medium grained, sub angular to sub rounded, moderately hard, moderately to well sorted, moderately strong cement, minor light brownish grey argillaceous matrix, trace lithics, poor to fair visible porosity, no fluorescence. |
| 2794.10 | Good | SANDSTONE: very light grey to very light brownish grey, very fine to medium grained, sub angular to sub rounded, moderately hard, well sorted, moderately strong cement, minor very light brownish grey argillaceous matrix, trace lithics, poor to fair visible porosity, no fluorescence. |
| 2792.70 | Good | SILTSTONE: medium grey to medium dark grey, arenaceous in parts, common calcareous fragments, fossiliferous, moderately hard to hard. |
| 2790.80 | Good | SILTSTONE: medium grey to medium dark grey, arenaceous, common calcareous fragments, fossiliferous, moderately hard to hard. |
| 2748.00 | Good | SILTSTONE: light grey, light brownish grey, siliceous, lutaceous in parts, laminated, carbonaceous fracture infill, trace carbonaceous specks, hard. |
| 2740.40 | None | Not recovered |
| 2734.60 | Good | SANDSTONE: light grey to light brownish grey, very fine to medium grained, sub angular to sub rounded, moderately hard to hard, moderately to well sorted, moderately strong cement, trace very light grey argillaceous matrix, trace pyrite, laminated in parts, poor to fair visible porosity, no fluorescence. |
| 2733.70 | None | Not recovered |
| 2732.80 | None | Not recovered |

| Conventional Core | | | | | |
|-------------------|-------------------|---------|---------------|--------------|-------------------|
| No | Interval (m MDRT) | Cut (m) | Recovered (m) | Recovery (%) | Formation |
| 1 | 2936.60 - 2972.60 | 36.00 | 36.41 | 101.0 | Lorelle Sandstone |
| 2 | 2972.60 - 3008.60 | 36.00 | 36.00 | 100.0 | Lorelle Sandstone |

| MWD Summary | | | | | |
|------------------|------|-----|------------------------|------|----------------|
| Hole Size (inch) | Tool | Run | Depth Interval (mMDPT) | Date | Max Temp. (°C) |

| Hole Size (Inch) | Tool | Run | Depth Interval (mMDRT) | Date | Max Temp (°C) |
|------------------|----------------|-----|------------------------|--------------------------|---------------|
| 17 1/2" | HDS1-GAMMA RAY | 1 | 69 - 1174 | 22-04-2015 to 24-04-2015 | 66 |
| 12 1/4" | HDS1-GAMMA RAY | 2 | 1183 - 2304 | 27-04-2015 to 29-04-2015 | 70 |
| 6 3/4" | AWR-ABS-HDS1 | 3 | 2303 - 2928 | 05-05-2015 to 07-05-2015 | 82.5 |
| 6 3/4" | AWR-ABS-HDS1 | 4 | 2925 - 3075 | 12-05-2015 to 14-05-2015 | 83 |